



PRODUCTS & SOLUTIONS



Redi-Wall LLC is a distributor/manufacturer and independently owned and operated. Show room located 5700 E Highland Rd., Howell, MI

REDI*ROCK®



The Redi-Rock Difference

Engineers and wall designers have been using Redi-Rock since 2000 to solve earth retention problems. Redi-Rock's people, products, and technology come together to create solutions you can trust to maximize usable space, prevent erosion, hold up roads and bridges, and so much more.



People

More than 155 Redi-Rock manufacturing locations in dozens of countries across the globe are complemented by our team of engineers and technical experts. When you choose a Redi-Rock solution, you can count on unmatched support and the confidence to tackle any land control challenge. Chances are, we've already helped someone overcome the problem you need to solve.



Technology

Your project will benefit from the most comprehensive technical resources around. From free wall design software to construction details and testing information, you'll create an earth retention system backed by support assets developed through decades of wall design and installation experience.



Products

An ever-expanding family of precast modular blocks (PMB) makes controlling earth with retaining walls easier for our customers. Whether your project demands gravity, reinforced, freestanding, or hybrid walls, the Redi-Rock system ensures you'll install a rock-solid solution that will last for generations.

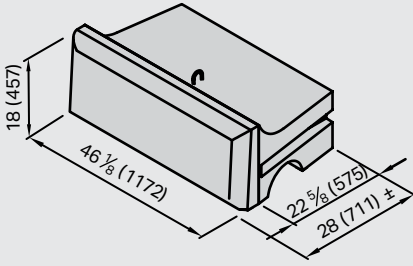
Gravity Walls

Gravity walls rely on the mass of the blocks to withstand the pressure of the earth. Without the need for reinforcement, Redi-Rock gravity walls can be built close to property lines and achieve design heights over 20 feet (6 meters) in certain scenarios.

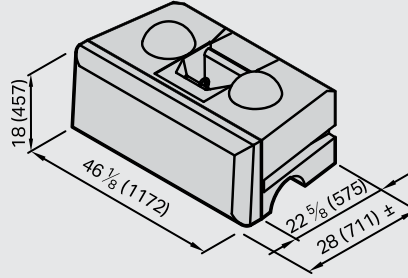
Achieve Tall Heights
Maximize Usable Space
Install Quickly with a Small Crew

Common Redi-Rock blocks used in gravity walls

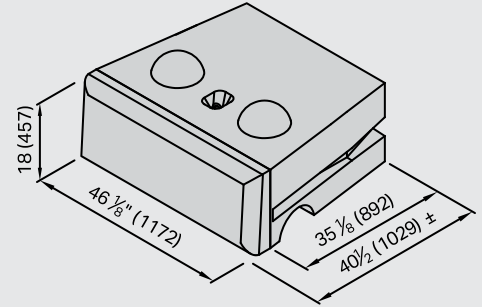
28 in (710 mm) Top Block



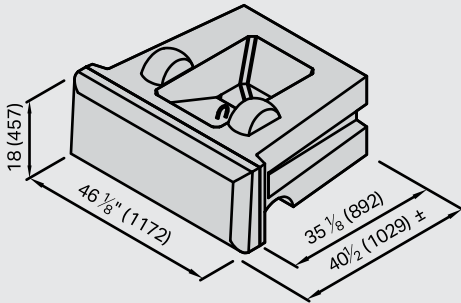
28 in (710 mm) Positive Connection (PC) Middle Block



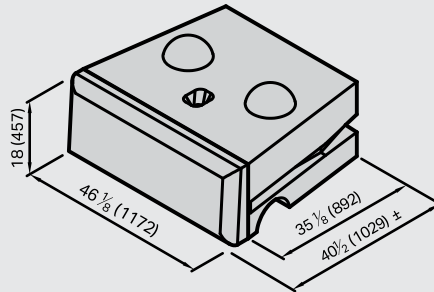
41 in (1030 mm) Middle Block



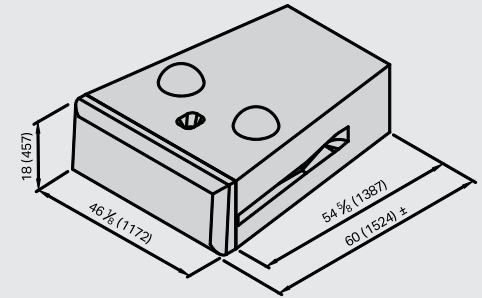
41 in (1030 mm) Hollow-Core Middle Block



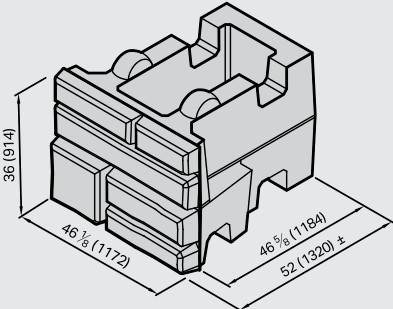
41 in (1030 mm) 9 in (230 mm) Setback Middle Block



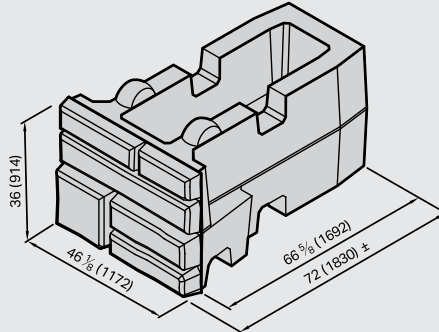
60 in (1520 mm) Bottom Block



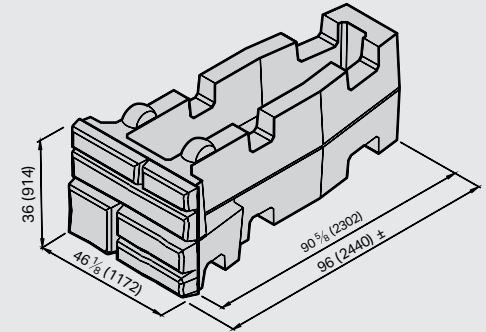
52 in (1320mm) XL Hollow-Core Block



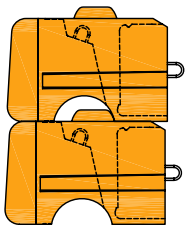
72 in (1830 mm) XL Hollow-Core Block



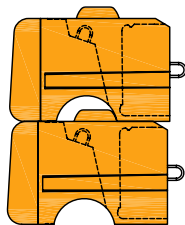
96 in (2440 mm) XL Hollow-Core Block



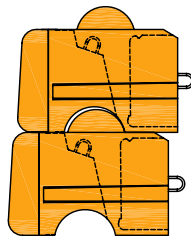
Design the most efficient solution by combining multiple batter options



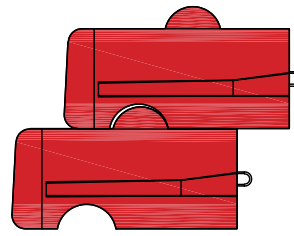
0° Batter
0 in (0 mm) Setback



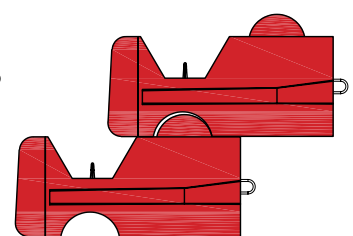
1° Batter
3/8 in (10 mm) Setback



5° Batter
1 5/8 in (41 mm) Setback



27.5° Batter
9 3/8 in (238 mm) Setback



47.3° Batter
16 5/8 in (422 mm) Setback

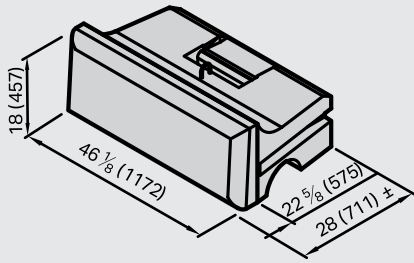
Reinforced Walls

Reinforced walls from Redi-Rock benefit from the sheer size of the precast modular blocks and from stabilizing the soil behind the wall. Whether using geogrid or earth anchors, Redi-Rock reinforced walls can help achieve wall heights over 50 feet (15 meters).

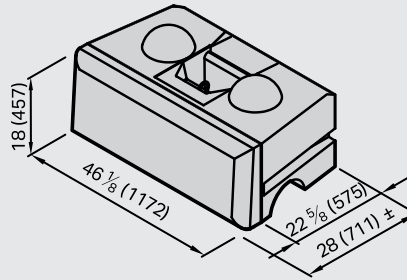
Support Heavy Live Loads
Reach Heights Over 50 Feet (15 Meters)
Reduce Geogrid Installation Errors

Common Redi-Rock blocks used in reinforced walls

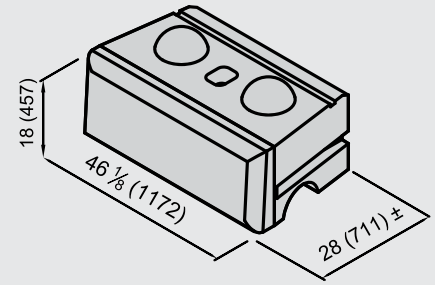
28 in (720 mm) Positive Connection (PC) Top Block



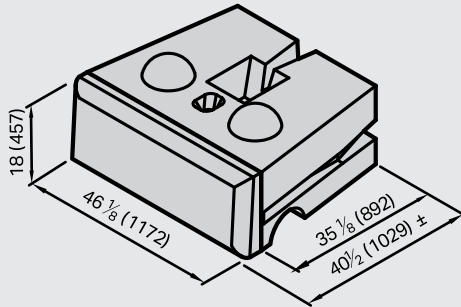
28 in (720 mm) Positive Connection (PC) Middle Block



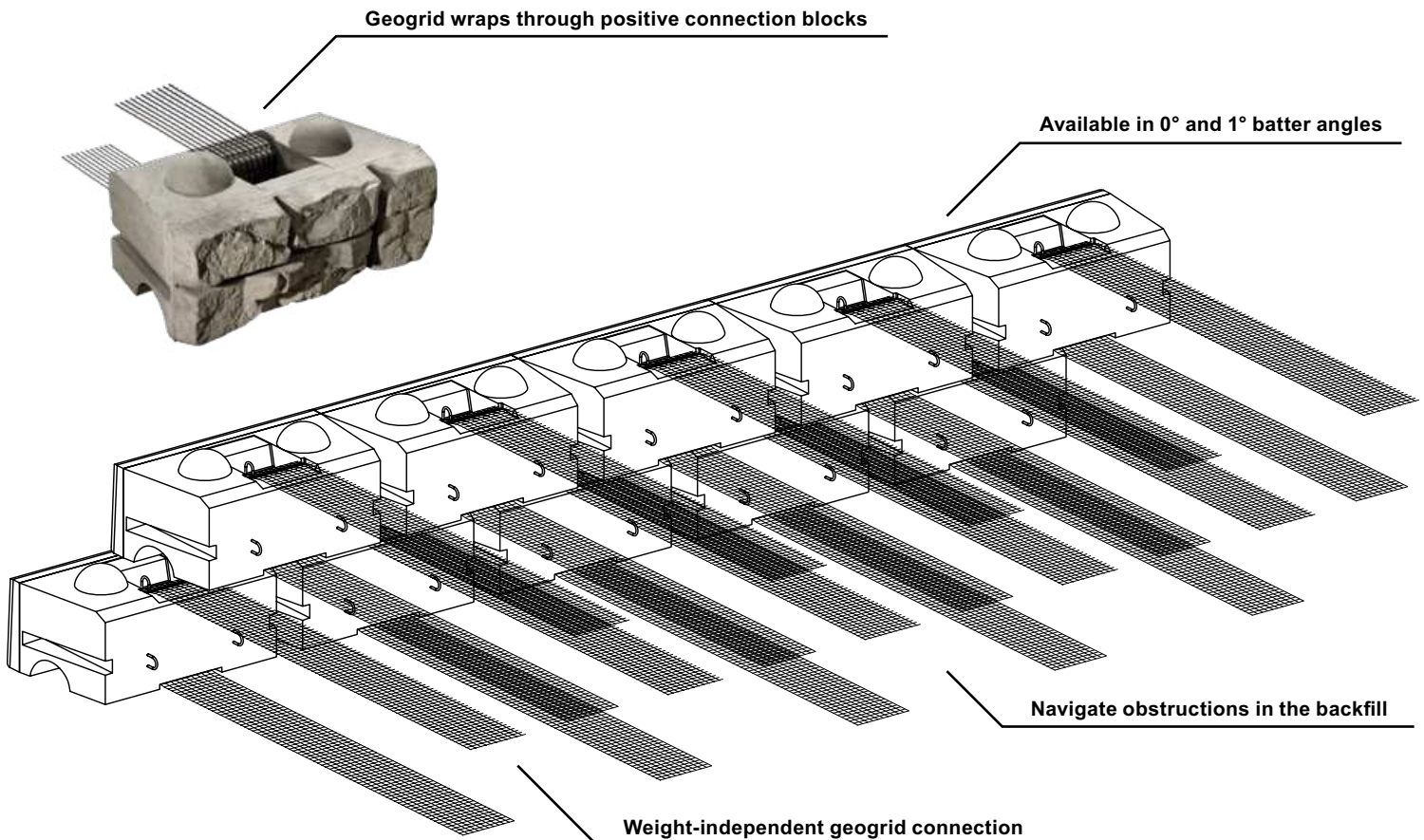
28 in (720 mm) Legacy 1-AT Middle Block



41 in (1030 mm) Anchor Middle Block



The standout option for mechanically stabilized earth (MSE) walls



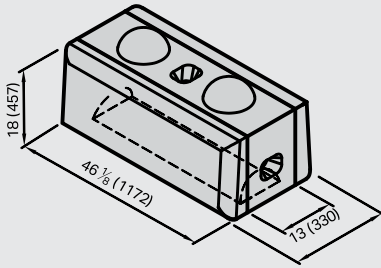
Freestanding Walls

Freestanding walls make for great top-of-wall finishes or stand-alone structures. With texture on two or more sides of the precast modular blocks, Redi-Rock freestanding walls look great, in addition to maintaining the structural integrity of a solution.

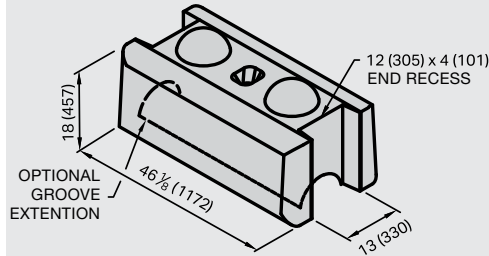
Implement Versatile Solutions
Coordinate with Retaining Walls
Create Grand Entrances & Signs

Common Redi-Rock blocks used in freestanding walls

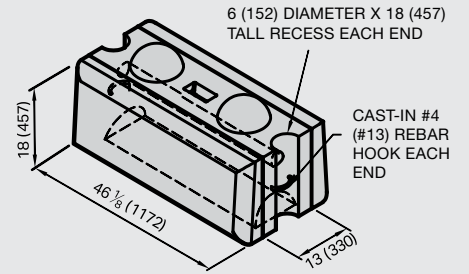
Straight Middle Block



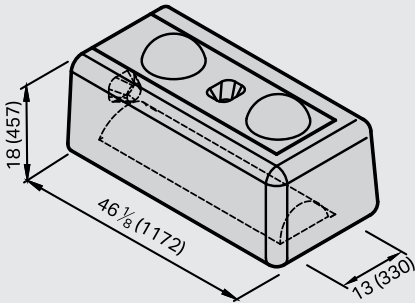
Variable Radius Middle Block



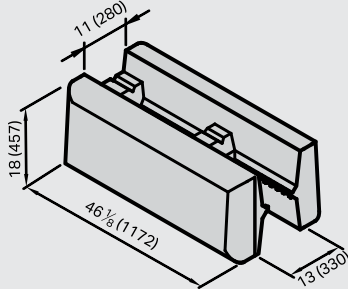
Force Protection Freestanding Middle Block



Freestanding Corner Middle Block

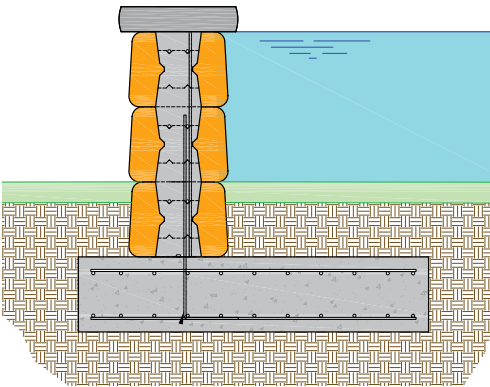


Freestanding Hollow-Core Block

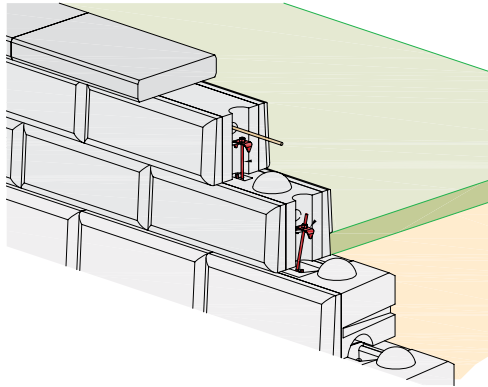


Freestanding walls are versatile and can provide many different solutions

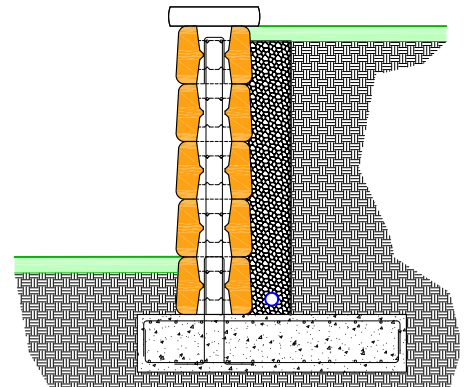
Flood Protection



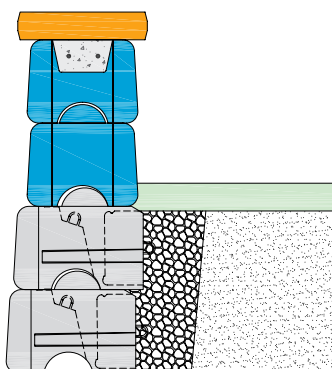
Force Protection



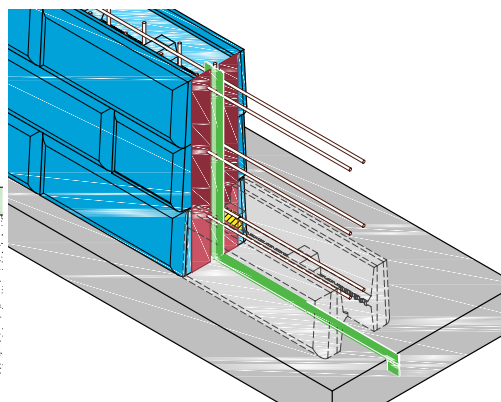
Cantilever Walls



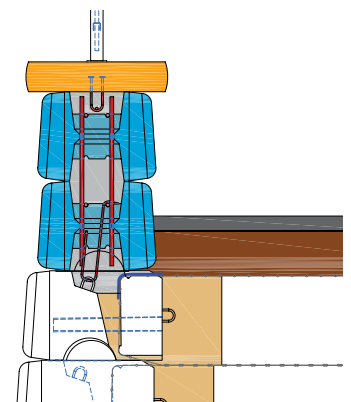
Bond Beam Top of Wall



Flood Control Wall Waterstop Options (F-HC)



Coping with Fence Attachment R-Anchor Option (F-HC)

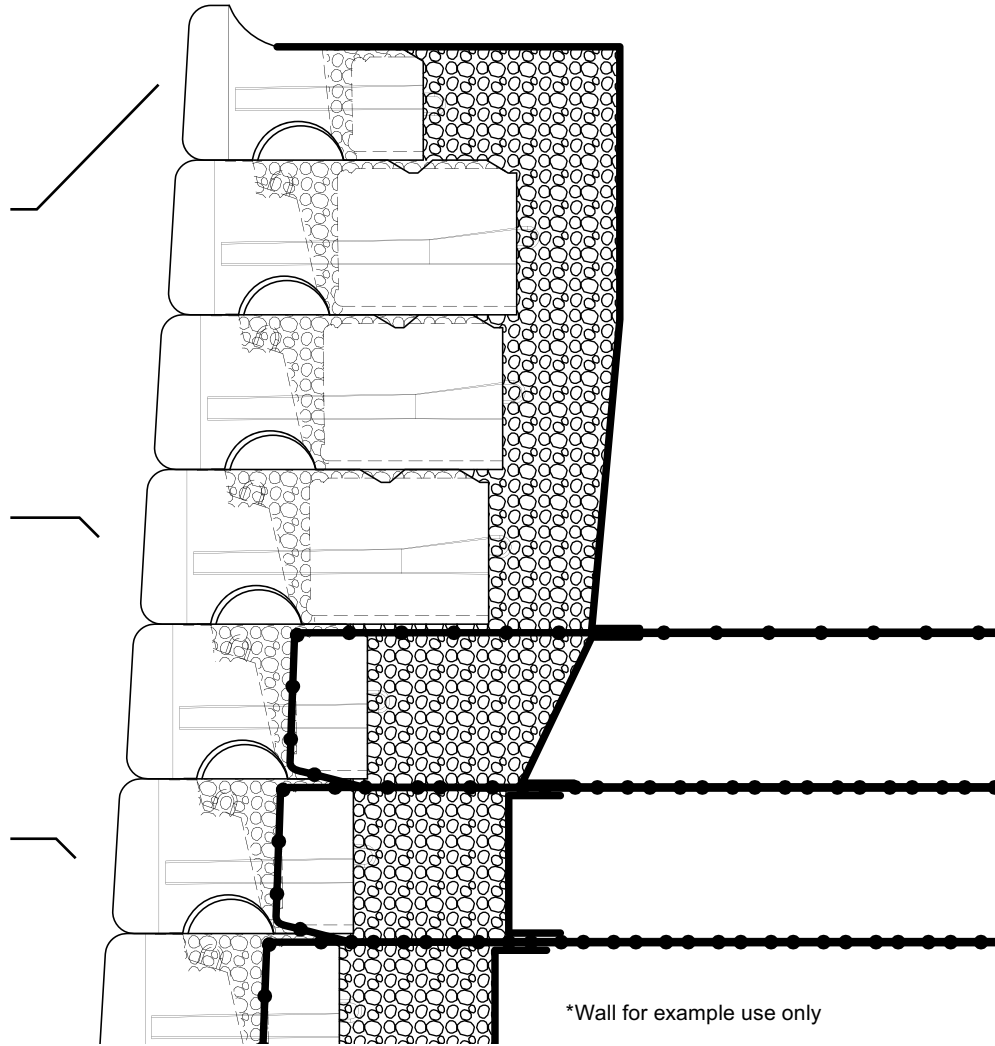
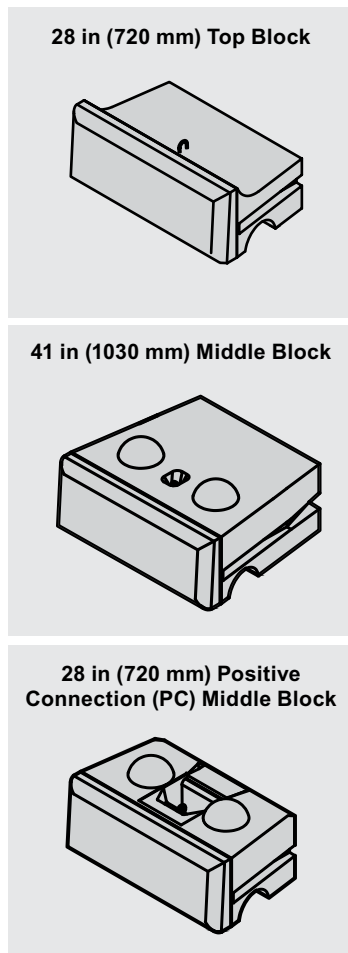


Hybrid Walls

The great thing about the Redi-Rock system is that all the precast concrete elements work together. When site scenarios demand different engineering behind the wall, a hybrid solution with Redi-Rock still presents a seamless solution on the front of the wall.

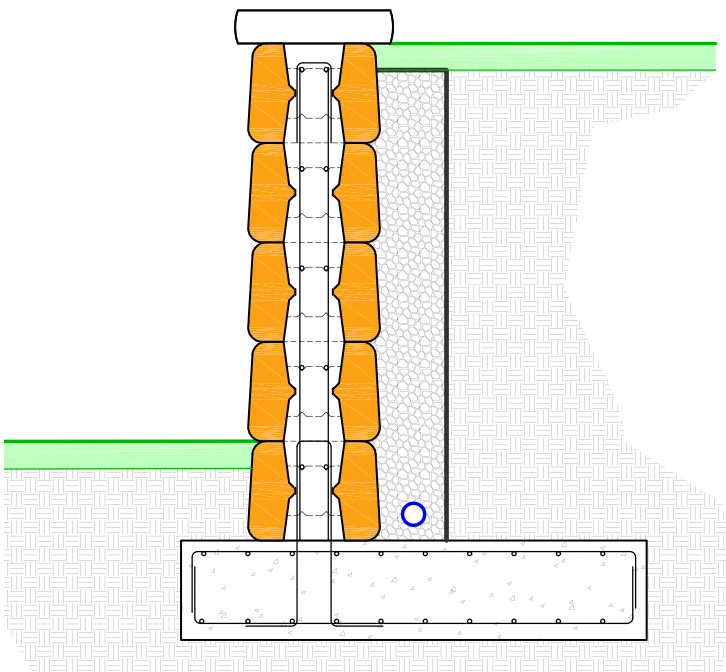
Optimize Wall Design & Cost
Finesse Top of Wall Obstructions
Combine Redi-Rock Solutions

Common Redi-Rock blocks used in hybrid walls

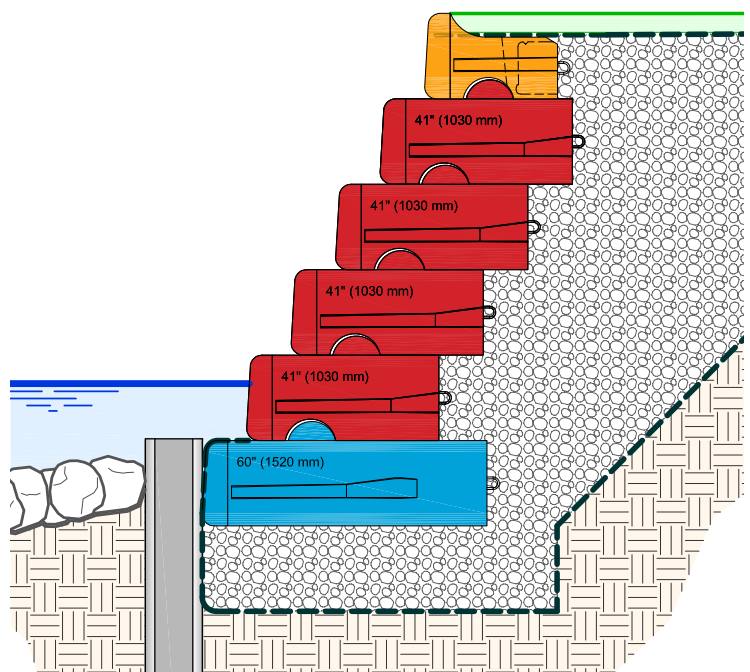


Create a custom solution with Redi-Rock to solve your toughest challenges

Cantilever Wall



Sheet Pile Protected Seawall



Accessories

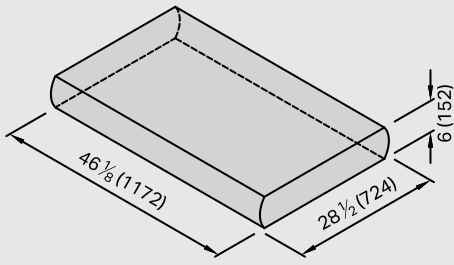
Redi-Rock's column, step, and cap blocks allow you to finish your project beautifully, coordinating perfectly with any texture. Realistic stone aesthetics combine with the durability of wet-cast concrete to give you a strong, long-lasting finish.



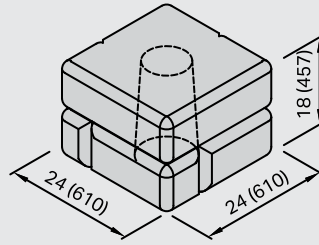
Design a Staircase with Curves
Create Seat Walls
Use Columns for Fencing

Common top-of-wall options & accessories

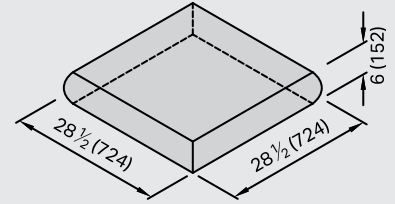
Two-Sided Cap & Step Block



Column 8 in (203 mm) Core Block



Column Cap



Finishing touches

Not only can Redi-Rock help you solve your project's big engineering challenges, it also assists you with your solution's enhancements. Redi-Rock is engineered to include curves, corners, transitions, and top-of-wall features with ease. Use our many case studies and comprehensive construction details to visualize the specialized solution you need.



Textures

With Redi-Rock, you'll never have to sacrifice a great-looking end result in order to get the engineered durability your project demands. Each local manufacturer chooses textures and colors suited to their region's landscape, so your finished project will blend into the natural surroundings, and be the envy of neighbors and colleagues!

**Colors vary depending on producer*



Limestone

Limestone blocks have a natural split limestone texture that beautifully mimics real quarried limestone. The massive size of each block face gives walls an impressive scale.

Cobblestone

Cobblestone blocks have a great quarried stone aesthetic. Each one-ton block features the appearance of six smaller blocks, making it a great look for any size project.

Ledgestone

Ledgestone blocks give retaining walls a random, stacked stone look. Because they're crafted with architectural-grade precast concrete, the level of detail is outstanding.



Kingstone

Striking a balance between the scale of Limestone and the relief of Ledgestone, Kingstone appears weathered by water and time like the crown of a natural stone outcropping.



Smooth

When you're looking for something a little more modern, the Redi-Rock Smooth texture with its crisp, clean lines provides the sophistication you want.

Industries

From bridges to break walls and stadiums to substations, engineers appreciate the versatility of Redi-Rock. Anywhere you need a retaining wall, Redi-Rock can help you create usable land and look good doing it.



Water

Redi-Rock walls protect shorelines, create space for stormwater channels and retention ponds, and save neighborhoods from flooding. That's because these walls can be built with minimal space requirements, are easy to install, and can be reinforced to withstand incredible storms.

Transportation

Whether you need abutments, wing walls, or retaining walls to support your roads and bridges, you can design a robust attractive solution using Redi-Rock. A simple construction sequence allows you to minimize right-of-way requirements and keep traffic moving.



Developments

Developers need retaining walls to maximize usable land, install quickly, and not detract from a space's attractiveness. Redi-Rock walls are an ideal solution for leveling lots, supporting buildings, creating room for parking, and mitigating stormwater with detention ponds.

Railways

Space is typically limited, live loads are a major consideration, and corrosion-free reinforcement systems without special connections are often necessary. Designers turn to Redi-Rock for railroad retaining wall projects because the engineering makes sense in these conditions.



Municipalities

Redi-Rock's superior natural appearance allows municipalities and government agencies to create great-looking infrastructure projects. Redi-Rock is also incredibly easy to install, meaning that cities can often use their own crews for building municipal retaining walls.



University Campuses

Leveling hilly terrain, creating space for a growing campus, making room for more parking, providing access to a new sports stadium...these functions are just a few of the many reasons Redi-Rock can be found on university and college campuses across North America and beyond.



Residential

Whether you need to create flat, usable space to build your dream home, preserve access to a walk-out basement, or protect your home from erosion, Redi-Rock provides the flexibility and beauty you need for your residential retaining walls.



Power Industry

When new electrical substations are going in, they need level areas to ensure construction and equipment installation proceeds seamlessly. Since Redi-Rock walls can be installed so close to property lines, utilities have all the space they need to do the job right.

Engineered Solutions

Designing critical wall structures is important work – and Redi-Rock has the best resources available to make your job easier. These include:



Design Resource Manual

The Design Resource Manual includes a detailed block library of every block in the Redi-Rock arsenal, an installation manual, construction details, FAQs, and more.



Wall Analysis Software

Created specifically for Redi-Rock by leading geotechnical software developer Fine, RRWall+ is a free program utilized by thousands of engineers to tackle their toughest wall design challenges.



Preliminary Wall Sections

Explore available solutions for your wall scenario - including necessary wall height, soil types, and load conditions - with the Preliminary Wall Section tool.



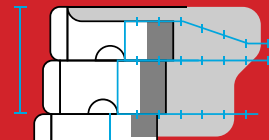
Specs & Data Sheets

Browse reinforced and gravity wall specifications and comprehensive details for each type of block, including dimensions, weights, and mix properties.



Testing Reports

Review the extensive Testing Reports that demonstrate Redi-Rock blocks will do the job today...and tomorrow.



Construction Details

Construction Details provide full-color renderings of wall cross-sections featuring various blocks, their setback options, and slope details to help engineers plan installations.

REDI-ROCK WALL+

Powered by 

FREE engineering software to help you design Redi-Rock walls



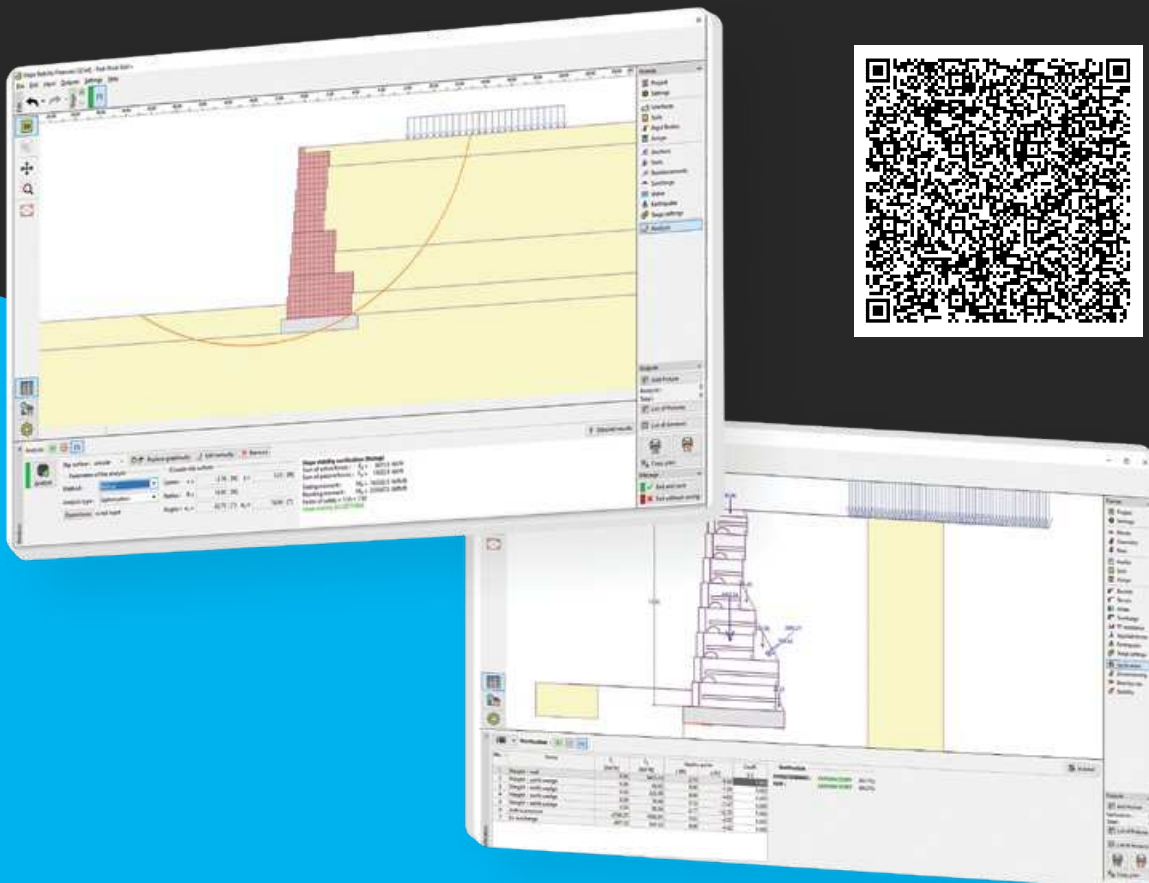
**Advanced
geotechnical
design**



**Available
in multiple
languages**



**Support team
access**



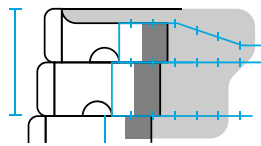
Easy Installation

Redi-Rock retaining walls are engineered to be simple to install, even in the most challenging sites. And to make it even easier, Redi-Rock has a variety of resources available to help you out, including:



Installation Guide

An extensive, illustrated resource that no wall designer or installer should be without.



Construction Details

Available for gravity, reinforced, hybrid, and freestanding walls, water applications, and much more, engineers will appreciate the comprehensive reference drawings to help them properly plan for installation.



Block Library

The Block Library includes all you need to know about each Redi-Rock block, including schematics, dimensions, weights, available face textures, and additional technical details.



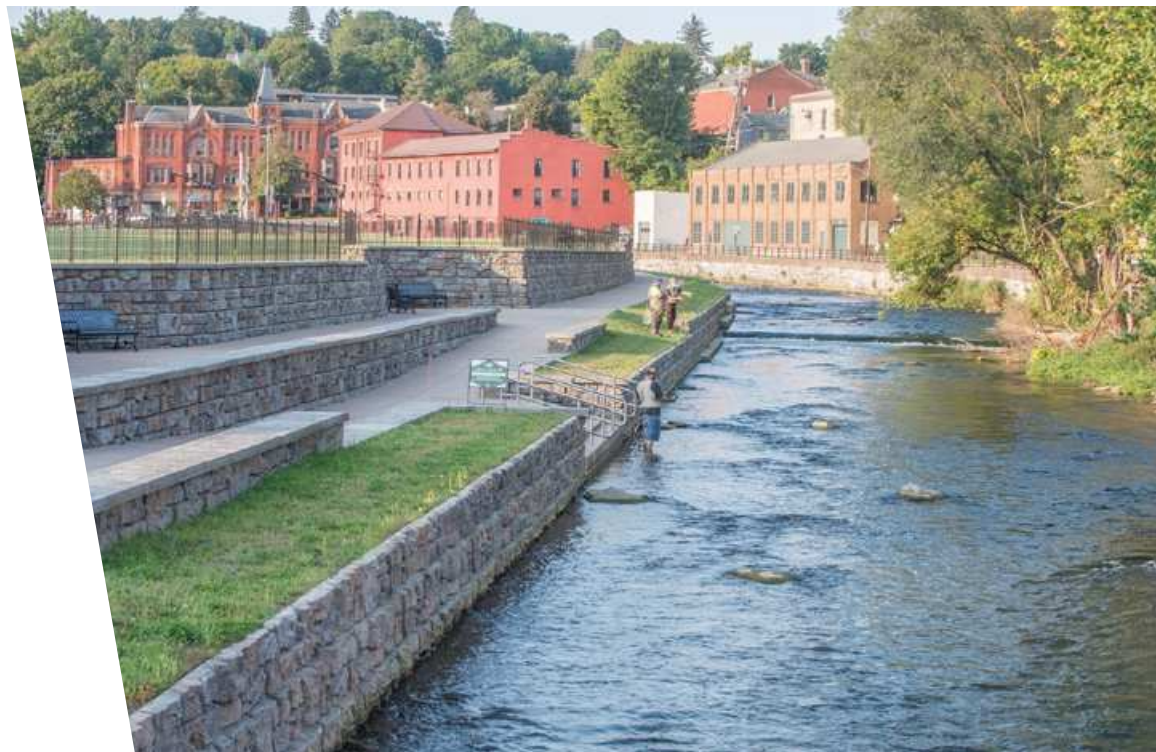


Case Studies

Wondering if a Redi-Rock wall can help you solve your unique earth control challenge? Check out how engineers and wall designers across industries and the world put Redi-Rock to work for them.



- Project:** Bellefonte Riverfront
- Location:** Bellefonte, Pennsylvania
- Solution:** Designed in a tiered configuration to support a walkway for a scenic stroll along Spring Creek
- Wall Area:** 17,000 square feet (1,579 square meters)



- Project:** Maine General Hospital
- Location:** Augusta, Maine
- Solution:** Create space for essential access points of hospital
- Wall Area:** 23,100 square feet (2,146 square meters)





Project: Paldiski Street Rail Viaduct

Location: Tallinn, Estonia

Solution: Stable, long-lasting wall for historic rail and roadway

Wall Length: 1,969 lineal feet (600 linear meters)



Project: Gisborne Shoreline and Road Reconstruction

Location: Gisborne, New Zealand

Solution: Rapidly rescue a local seaside roadway washed out by a storm and protect it from future washouts

Wall Height: 12 feet (6.4 meters)



Project: Red Hills Mine

Location: Choctaw County, Mississippi

Solution: Allow 35-foot high egress for large mining equipment under SR-9

Wall Area: 18,000 square feet (1,672 square meters)







Like what you see?

We'd love to help you with your next project.



REDI*ROCK[®]





Every Redi-Rock Distributor/Manufacturer
is independently owned and operated.
Colors vary by region; please contact your local manufacturer
to find available options in your area.
Latest Revision: October 26th, 2022



5700 E Highland Rd., Howell, Michigan 48843

© 2015-2022 Redi-Rock International, LLC